

EdgeVu Direct Set (H450)

Technical Data Sheet

Frame/Sash

- Architectural Grade 6063-T63 Aluminum
- Euro-Groove Mainframe/Sash
- Azo-Core Thermal Break (Mainframe/Sash)
- 45 Degree Mitered Mainframe/Sash Corners
- Silicone Injected Corner Keys
- 4-1/8" Overall Frame Depth
- 1-5/8" Exterior Sightlines
- 1-1/4" Pre-Punched Nail Fin
- Overlapping Sash to Mainframe

Glazing

- Beveled Exterior with Square Stop Interior
- Quanex Super Spacer
- 100% Silicone Wet Glaze
- Double/Triple Insulated Glass Options
- Annealed, Tempered, Laminated and Obscure Glass Options Available

Weather stripping

- Bulb Seal Gaskets

Mulling Options

- Continuous Frame Configurations
- Field Applied Structural Mulls

Grid Options

- Grids Between the Glass
- Simulated Divided Lites

Paint

- 2604/2605 FGIA High Performance Powder Coatings
- 30 Standard Colors
- Custom Colors available

EdgeVu Direct Set (H450)		
NAFS Rating	AW-PG100	
Design Pressure (P.S.F.)	100	
Air Infiltration at 25 MPH (cfm/ft ²)	<0.05	
Water Resistance	15	
U-Value (Based on Cardinal 366 Low-E/Argon Fill)	0.26	
SHGC (Based on Cardinal 366 Low-E/Argon Fill)	0.24	
Frame Sizing	Width	Height
Minimum	15"	15"
Maximum	144"	144"



Quaker Window Products
504 U.S. Hwy 63 South
Freeburg, MO 65035
(800) 347-0438
www.quakerresidentialwindows.com

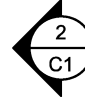
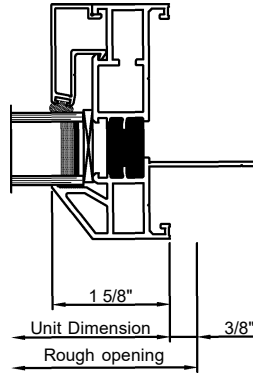
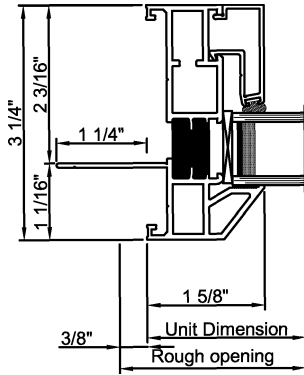
Discover More Here:



QTZ-EV-DST-0324

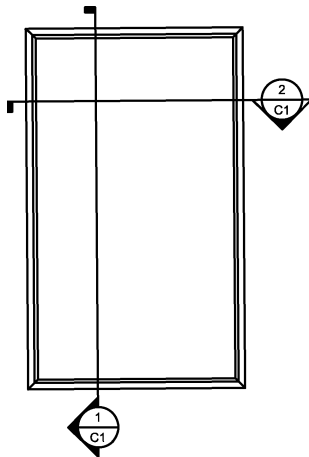
EdgeVu (H450) Direct Set Window

Cross section details



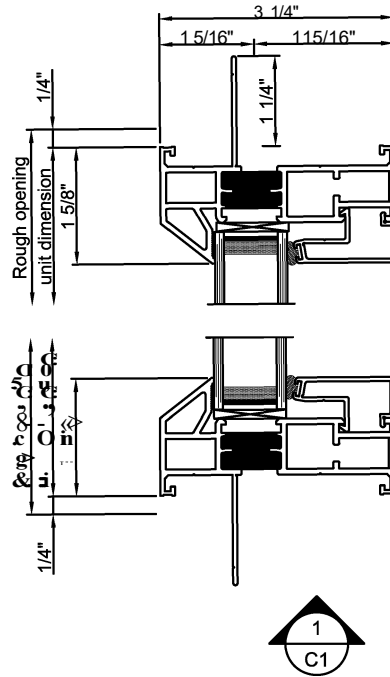
Window cut sections 3/8" = 0' 1"

Exterior



Window Elevation 3/8" = 1' 0"

Exterior



Window cut sections 3/8" = 0' 1"

Note: All dimensions are approximate. Quaker reserves the right to change specifications without notice.